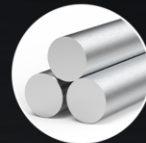


# HERO

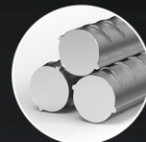
## DRY CUT SAW MACHINE CRD1



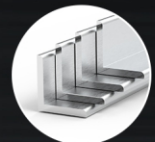
Round Sted Bar



Steel Pipe



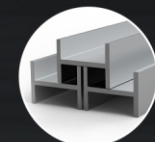
Reinforted Steel Bar



Angle Steel



Sted Pipe(square)



I-Beam Steel

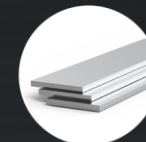
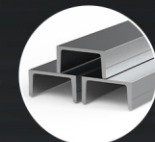


Plate Steel



U-Steel

### Advantage

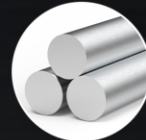
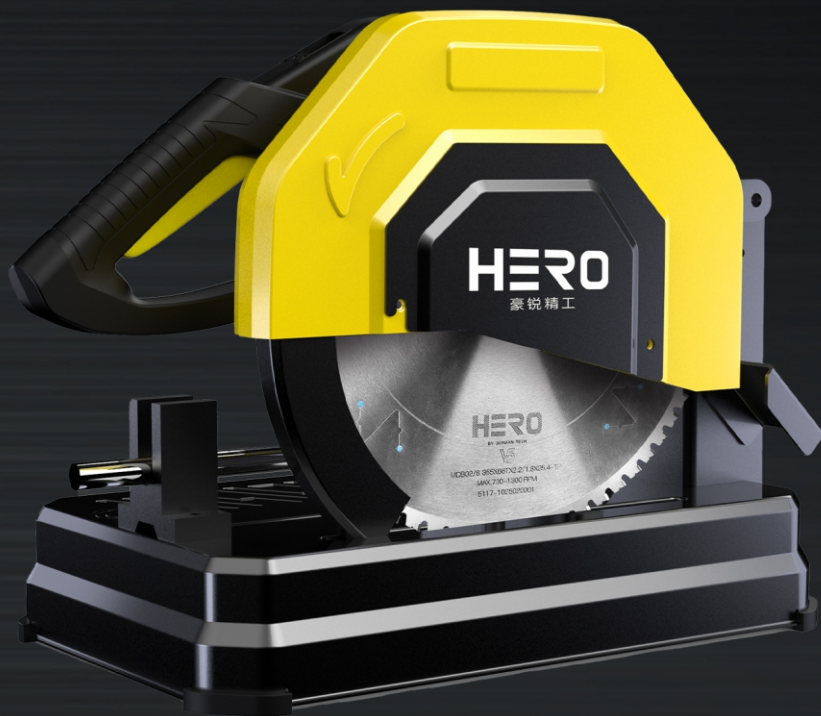
- Simple strcncture,economical and partical
- Pure copper motor,surging power
- Super twist,powerful cutting
- Easy maintenance,simple operation

### Parameter

Model	CRD1-255	CRD1-355
Power	2600W	2600W
Max.Saw Blade Diameter	255mm	355mm
RPM	1300R/Min	1300R/Min
Hole Diameter	25.4mm	
Voltage	220V/50Hz	

# HERO

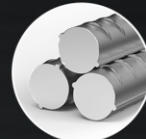
## DRY CUT SAW MACHINE ARD2



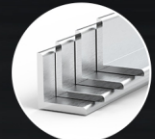
Round Steel Bar



Steel Pipe



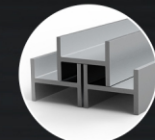
Reinforced Steel Bar



Angle Steel



Steel Pipe(square)



I-Beam Steel

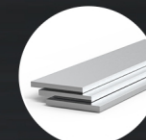
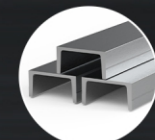


Plate Steel



U-Steel

### Advantage

- Permanent magnet motor, long working life
- LED light, night work possible
- Three level speed, switch on demand
- Adjustable clamp, accurate cutting

### Parameter

Model	ARD2-255	ARD2-355
Power	3500W	3500W
Max. Saw Blade Diameter	255mm	355mm
RPM	750-1300R/Min	750-1300R/Min
Hole Diameter	25.4mm	
Voltage	220V/50Hz	



# HERO

## DRY CUT SAW BLADE(FERROUS METAL)

ENVIRONMENTAL FRIENDLY NO DUST, SAFE AND NO CRACK

SMOOTH NO CHIP, HIGH EFFICIENT CUTTING



### CUTTING MATERIAL

Dry cut saw blade fit for the steel material which hardness lower than HRC40, include: Alloy Steel medium-carbon steel, cast iron, structural steel etc., especially for quenched and tempered steel.



round steel



circular tube



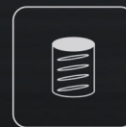
angle steel



channel steel



deformed bar



square tube



aluminum material



# HERO DRY CUT SAW BLADE(FERROUS METAL)

**ENVIRONMENTAL FRIENDLY NO DUST,SAFE AND NO CRACK**

**SMOOTH NO CHIP,HIGH EFFICIENT CUTTING**



Belgium umicore sandwich  
brazing flake

**Impact resistance**

**No teeth crack**



Cermet tip

**Smooth cutting**

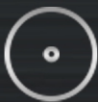
**finishing and chips free**



Environmental friendly

**Anti-corrosion coating:**

**it protects the blade  
from rust**



Japan import steel plate

**Stable cutting and**

**No deflection**



Special grinding technical  
improve the roughness of  
side angle 30%

**Sharp cutting and**

**no chips**



Silent lines design

**No vibration and reduces**

**the noise while cutting**





**HERO** DRY CUT SAW BLADE(FERROUS METAL)

**ENVIRONMENTAL FRIENDLY NO DUST,SAFE AND NO CRACK**

**SMOOTH NO CHIP,HIGH EFFICIENT CUTTING**

**JAPAN IMPORT STEEL PLATE**

**STABLE CUTTING AND NO DEFLECTION**



**HERO**  
BY GERMAN TECH  
V5

203/NS-405X70TX2.9/2.5X25.4-HP  
MAX.5500-RPM  
03-102418001071



**HERO** DRY CUT SAW BLADE(FERROUS METAL)

**ENVIRONMENTAL FRIENDLY NO DUST,SAFE AND NO CRACK**

**SMOOTH NO CHIP,HIGH EFFICIENT CUTTING**

**BELGIUM UMICORE SANDWICH BRAZING FLAKE**

**IMPACT RESISTANCE ,NO TEETH CRACK**



Sliver 银  
Copper 铜  
Sliver 银

**HERO**  
BY GERMAN TECH  
**V5**

CDB03/NS 405X70TX2.9/2.5X25.4-1P  
MAX.5500.RPM  
5103-1024180010/1





**HERO** DRY CUT SAW BLADE(FERROUS METAL)

**ENVIRONMENTAL FRIENDLY NO DUST,SAFE AND NO CRACK**

**SMOOTH NO CHIP,HIGH EFFICIENT CUTTING**

Just 4.3 seconds  
for 32mm steel bar

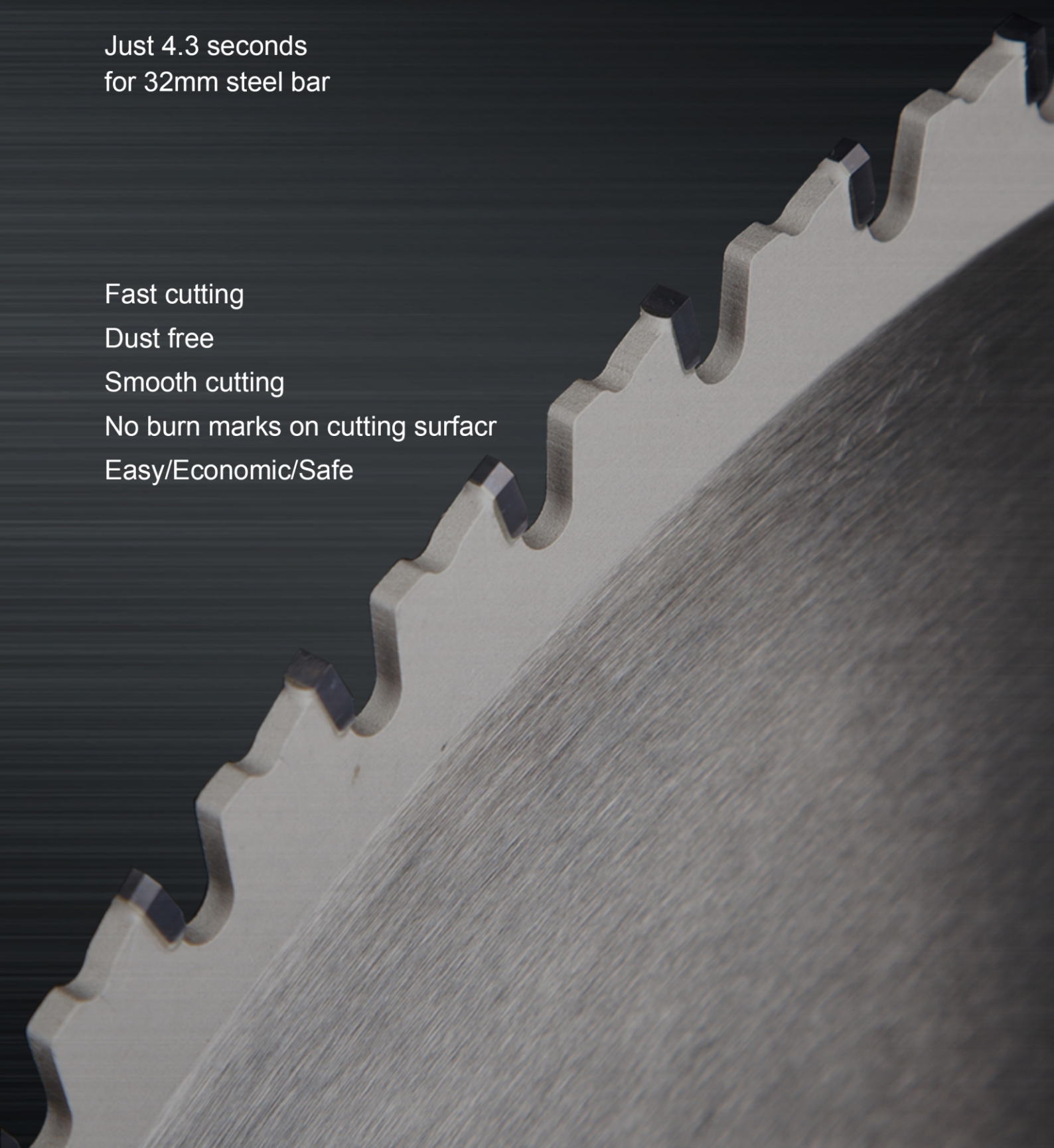
Fast cutting

Dust free

Smooth cutting

No burn marks on cutting surfacr

Easy/Economic/Safe






# HERO DRY CUT SAW BLADE(FERROUS METAL)

**ENVIRONMENTAL FRIENDLY NO DUST,SAFE AND NO CRACK**

**SMOOTH NO CHIP,HIGH EFFICIENT CUTTING**

**PRODUCT TESTING: 355\*66T\*2.2\*1.8\*25.4**

Material	Speed	Time 
2mm 4X4 Rectangular tube	1300rpm	1.4s
45° Splicing rectangular tube	1200rpm	4.9s
32mm Rebar	1100rpm	4.3s
100X68 I-beam	900rpm	9.9s
100X48 Channel steel	900rpm	7.2s
50mm Solid 45# round bar	700rpm	10.1s

## PRODUCT SPECIFICATIONS

Outer Diameter | Number of Teeth | Tooth Width | Thickness Plate | bore | Tooth shape

185	36T	2.0	1.6	22	ATB
255	48T	2.0	1.5	25.4	TCG
305	60T	2.2	1.8	25.4	TCG
305	80T	2.2	1.8	25.4	TCG
355	66T	2.2	1.8	25.4	TCG
355	80T	2.2	1.8	25.4	TCG
405	70T	2.9	2.5	40	TCG



# HERO DRY CUT SAW BLADE(FERROUS METAL)

## ENVIRONMENTAL FRIENDLY NO DUST,SAFE AND NO CRACK

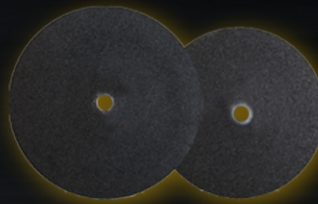
### SMOOTH NO CHIP,HIGH EFFICIENT CUTTING

#### CUTTING COMPARISON TEST

Dry cut saw blade(ferrous metal)



Smooth cutting plane,  
Cutting precision 0.01mm



Grinding sand wheel



Chips on the cutting plane  
Cutting precision:1mm



CUTTING PLANE TEST



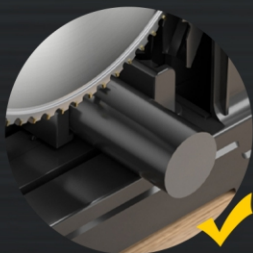
No dust or crack



SAFETY TEST



Dust and easy crack

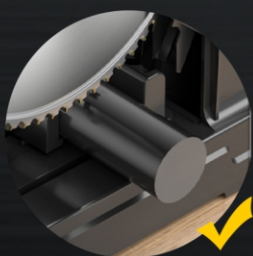


10 seconds can finish 50mm round steel

SPEED TEST



need 50 seconds



Each saw blade can cut 50mm  
round steel 1000 times

DURABILITY TEST



One saw blade workload  
equal 100pcs sand wheel



Average cost is 45usd/1000time  
The cost for each cutting is 0.045usd



COST PERFORMANCE

1.5usd/8 times  
cost is 0.19usd

**HERO** DRY CUT SAW BLADE(FERROUS METAL)

**ENVIRONMENTAL FRIENDLY NO DUST,SAFE AND NO CRACK**

**SMOOTH NO CHIP,HIGH EFFICIENT CUTTING**

**MARKET FEEDBACK**

**ENVIRONMENTAL FRIENDLY  
NO DUST,SAFE AND NO CRACK**



**HIGHER DURABILITY AND  
COST-EFFECTIVE**



**SMOOTH NO CHIP,HIGH  
EFFICIENT CUTTING**



**FAST CUTTING,NO BURN  
MARKS ON CUTTING SURFACE**

